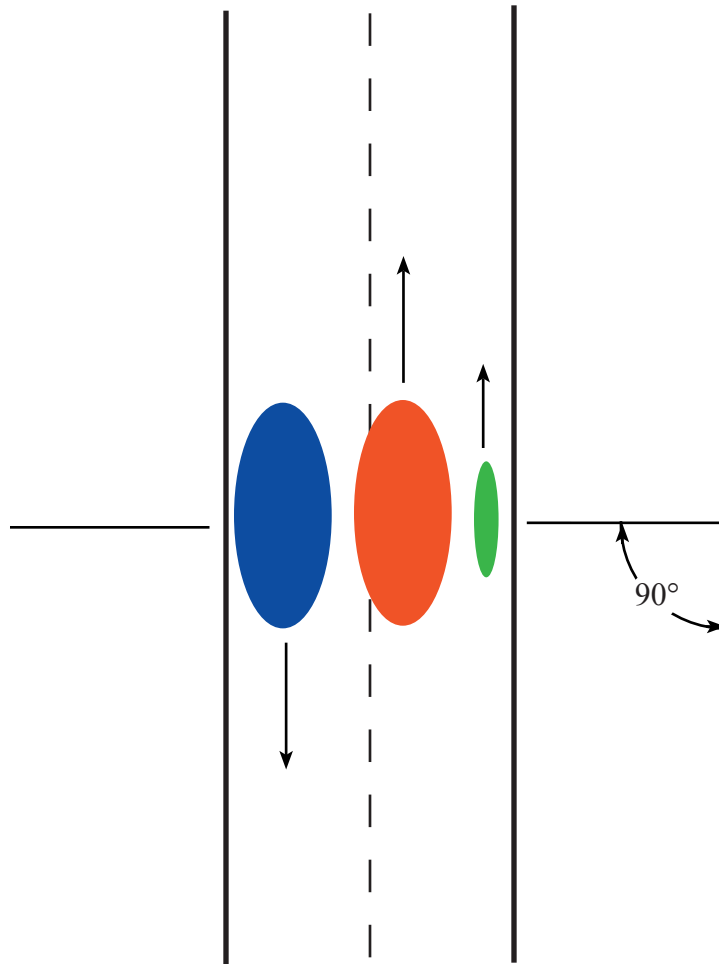


## The First Cycling Theorem of Right Angles

When a cyclist rides a two-laned road with vehicles approaching simultaneously from each direction, the vehicles will always meet one another at the exact moment they pass the cyclist. A line drawn through the midpoints of both vehicles and the bicycle will form a 90° angle to the road.



### Corollary to the Cycling Theory of Right Angles

For every value of  $X$ , where  $X$  = the IQ of the red vehicle driver,

$$X^2 = 0$$